



# PERIO POINTERS

## Socket Repair

Studies show that after an uncomplicated extraction there will be 23% volume loss of bone in the first year, and 34% after five years. If you want to preserve the bone for possible implant placement or even to preserve the bone for the pontic area of bridgework, you may want to consider doing socket repair.

The extraction has to be atraumatic. You may need to flap the area, use periostomes to gently lift the tooth out. If it is a molar, I would section the roots to take them out one at a time. All granulation tissue will need to be removed. I use freeze-dried demineralized bone, calcium sulphate, and a collagen barrier.

There are other ways to do it, such as using freeze-dried bone and a collagen plug. I feel the way I do it gives me more control. If you want bone, put in bone.

It will take an hour and you have to factor in the product costs, to come up with a fee.

August 2007



In primitive societies, when native tribes beat the ground with clubs and yell it was called witchcraft, today it is called golf.

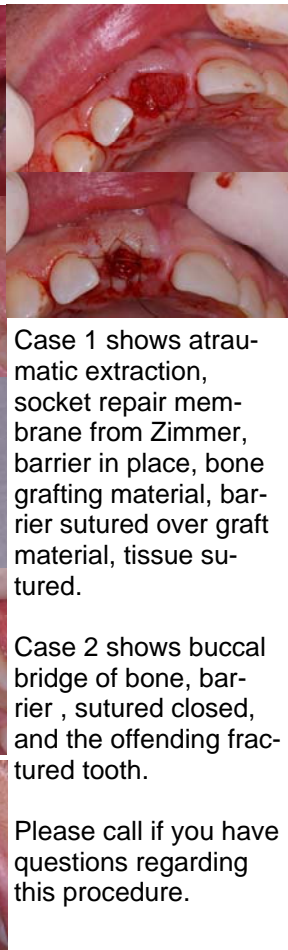
### Newsletter Spotlight

A great service to the patient and to your bottom line.

## Case Study



Case Study 1



Case Study 2

Case 1 shows atraumatic extraction, socket repair membrane from Zimmer, barrier in place, bone grafting material, barrier sutured over graft material, tissue sutured.

Case 2 shows buccal bridge of bone, barrier, sutured closed, and the offending fractured tooth.

Please call if you have questions regarding this procedure.



You can get the materials you need from Tissue Specialists at 501-868-1895 and the instruments you need like membrane placement instrument, bone spoon and pluggers and periostomes from Salvin at 1-800-535-6566. Sources for barriers are Tissue Specialists (RCM15) or Zimmer at 217-691-1808 (Socket Repair Membrane)